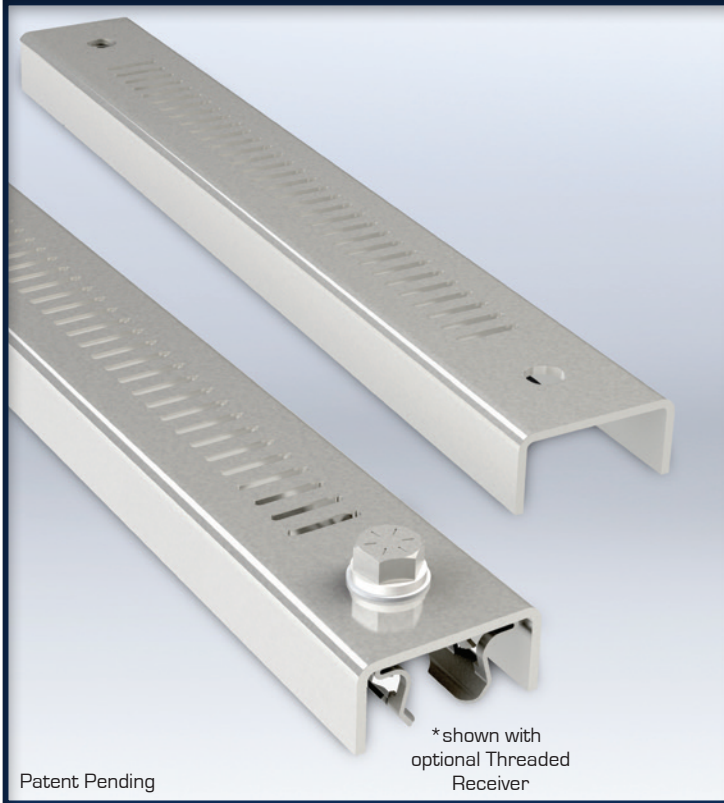


DAKOTA SMART-CAPS™



Features & Benefits:

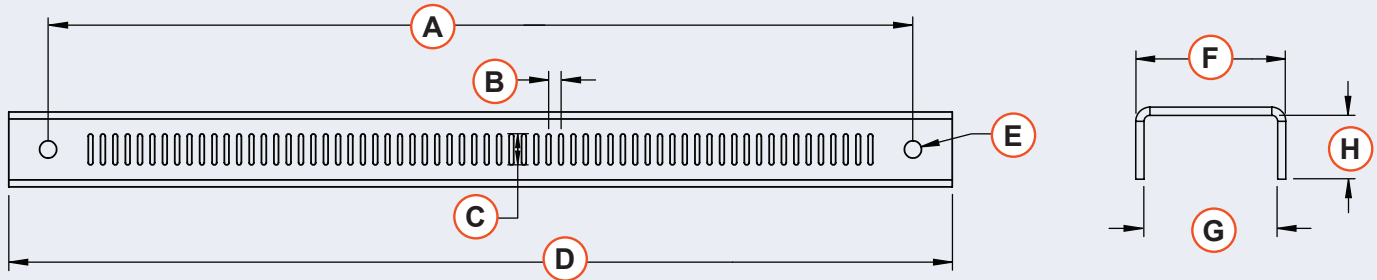
- **HUGE time savings!**
- Economical option for dual mounting top and bottom strut
- Optional receiver available for easy installation to strut*
- Usable with most standard strut
- Multiple lengths available (14", 24", 120")
- High grade material
- Clean and organized appearance
- Ready to use with all Dakota Clamps
- Double row capable at top of electrical panel with Dakota Smart-Strut
- Patent Pending
- Made in the USA



Specs

| | |
|---------------------|-------------------------------------|
| Material | 12 Gauge Structural Steel, Grade 50 |
| Finish | Pre-galvanized Zinc |
| Color | Grey |
| Applications | Multiple |

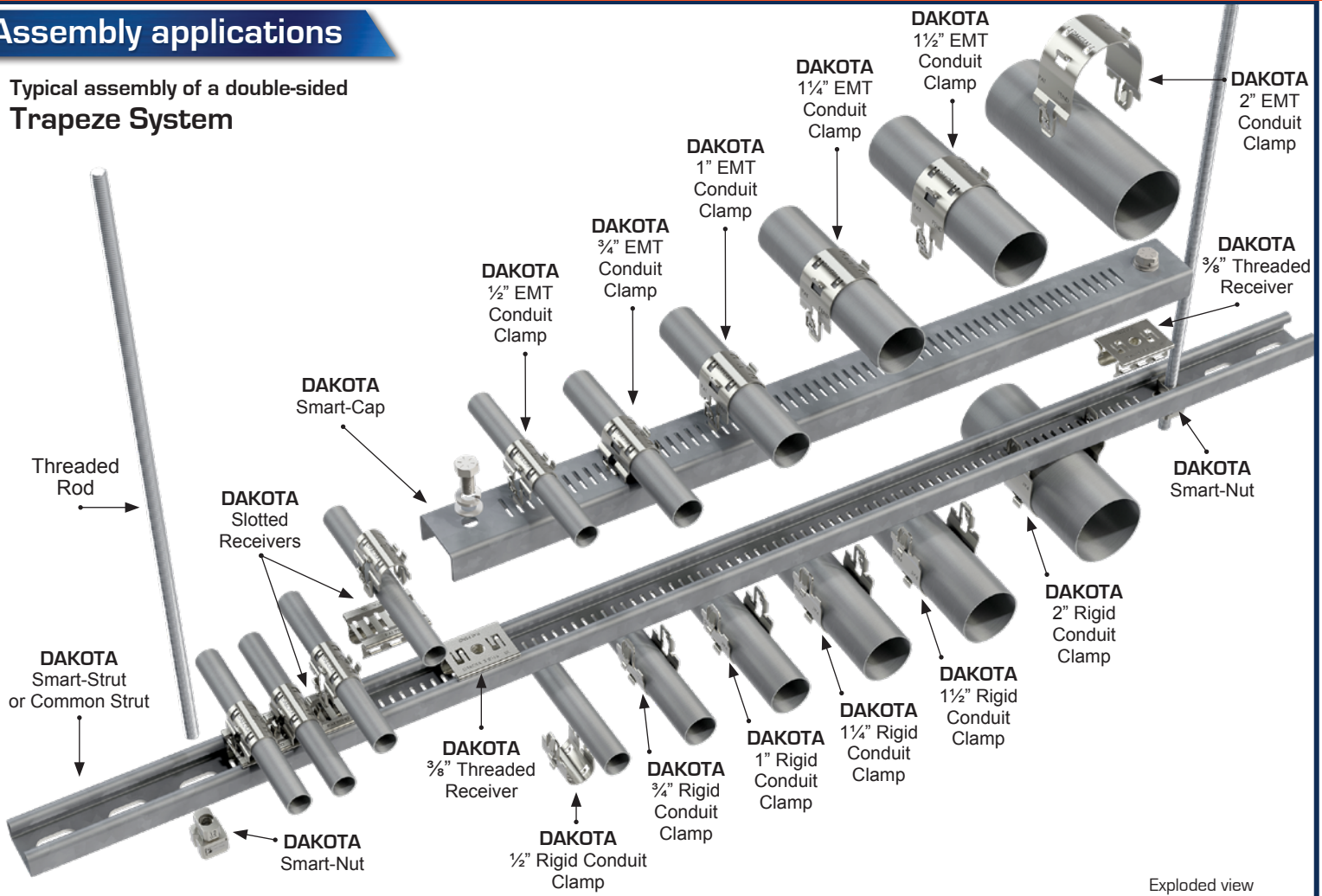
Dimensions



| Part # | Description | Gauge | A Hole to Hole Center Distance | B Distance Between Slots | C Slot Length | D Overall Length | E Hole Diameter | F Overall Width | G Inside Width | H Inside Height |
|------------------|--|--------|--------------------------------------|--------------------------------|---------------------|------------------------|-----------------------|-----------------------|----------------------|-----------------------|
| DS-CAP12-14-PG | 14" Dakota Smart-Cap | 12 ga. | 22" Centers (55.8mm) | 31.5" (8mm) | 0.787" (20mm) | 1' 2" (14") | 13/32" (11.1mm) | 1.91" (48.5mm) | 1.7" (43.2mm) | 13/16" (20.6mm) |
| DS-CAP12-24-PG | 24" Dakota Smart-Cap | | | | | 2' (24") | | | | |
| DS-CAP12-120-PG | 120" Dakota Smart-Cap | | | | | 10' (120") | | | | |
| DS-CAPTR12-14-PG | 14" Dakota Smart-Cap with Threaded Receiver | | | | | 1'2" (14") | | | | |
| DS-CAPTR12-24-PG | 24" Dakota Smart-Cap with Threaded Receiver | | | | | 2' (24") | | | | |

Assembly applications

Typical assembly of a double-sided Trapeze System



Visit WWW.DAKOTASYSTEMSUSA.COM for

- "How To" Videos
- Time Savings Comparison Information
- Industry Specific Applications
- Product Specifications
- New & Upcoming Products

DAKOTA product line



DAKOTA Clamps

DAKOTA Smart-Strut™

DAKOTA Smart-Caps™ & Receivers

DAKOTA Smart-Nut™