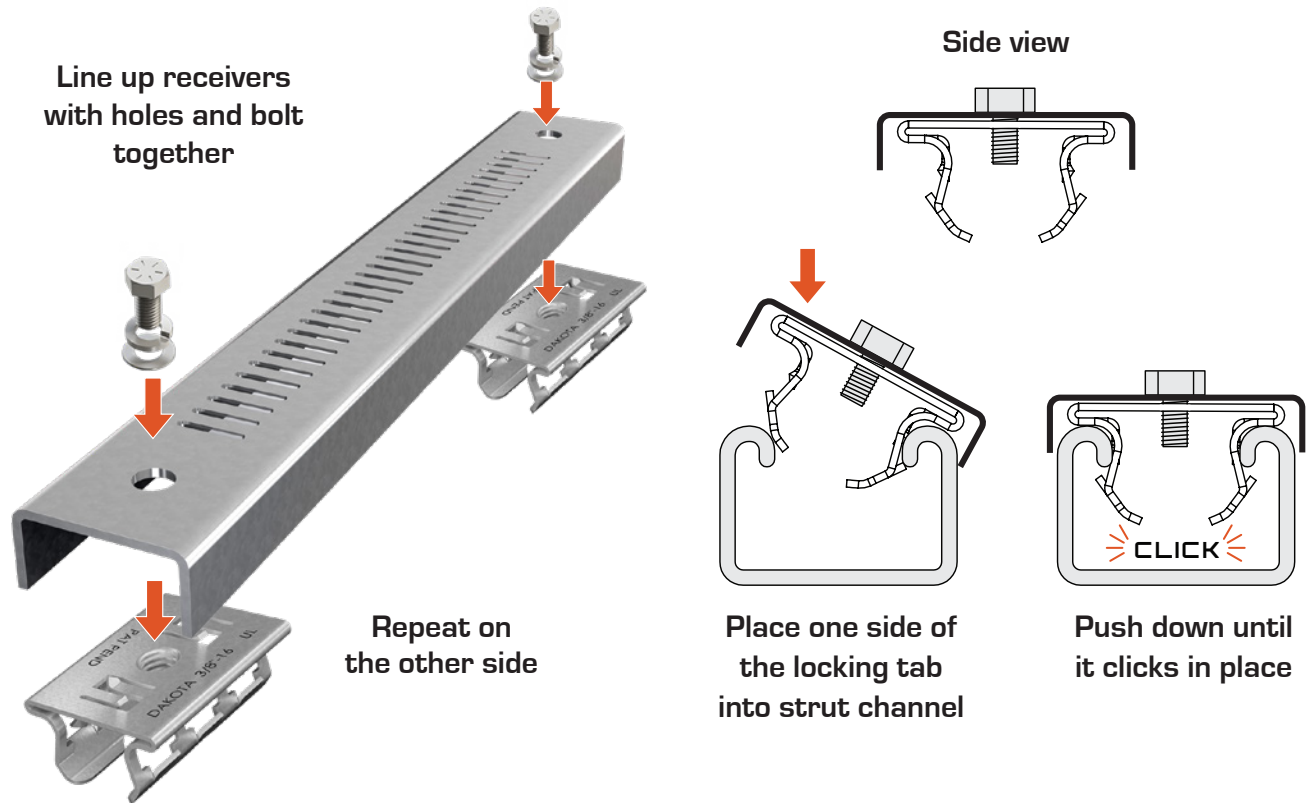


SMART-CAPS™

INSTALLATION INSTRUCTIONS



SMART-CAPS™

1. Materials needed: Two 3/8"-16 Dakota Threaded Receiver (DS-TR38-BPT or DS-TR38-WPT), two 3/8"-16 steel bolts and two washers
2. Place the flat side of the Dakota Threaded Receiver against the open side of the Smart-Cap and line up the holes in the Smart-Cap and Threaded Receiver
3. Insert a 3/8"-16 steel bolt and washer into the Smart-Cap hole and through the Threaded Receiver hole
4. Turn bolt clockwise until tight
5. Repeat steps 1-4 on the other side of the Smart-Cap
6. Once the Threaded Receivers are installed, place one side of the locking tab of the Smart-Receiver into the open side of the strut
7. Push down the opposing side of the Smart-Receiver into the open strut channel
8. Listen for a click to know the Smart-Cap is locked in place